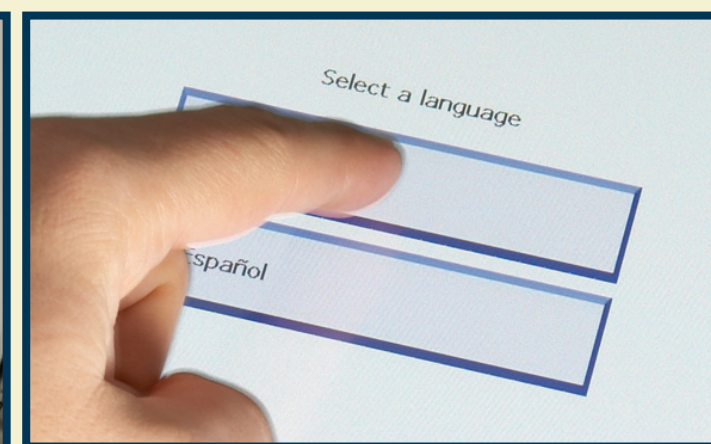


1,2,3, **VOTE!**

Voting With the ES&S AutoMARK™

1 INSERT BALLOT

With the ballot still in the provided privacy sleeve, insert your ballot into the ES&S AutoMARK ballot acceptor. Next, select your preferred language by touching the proper box.

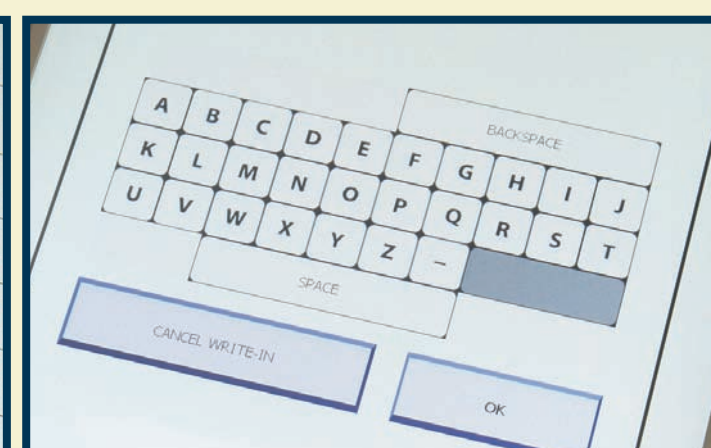
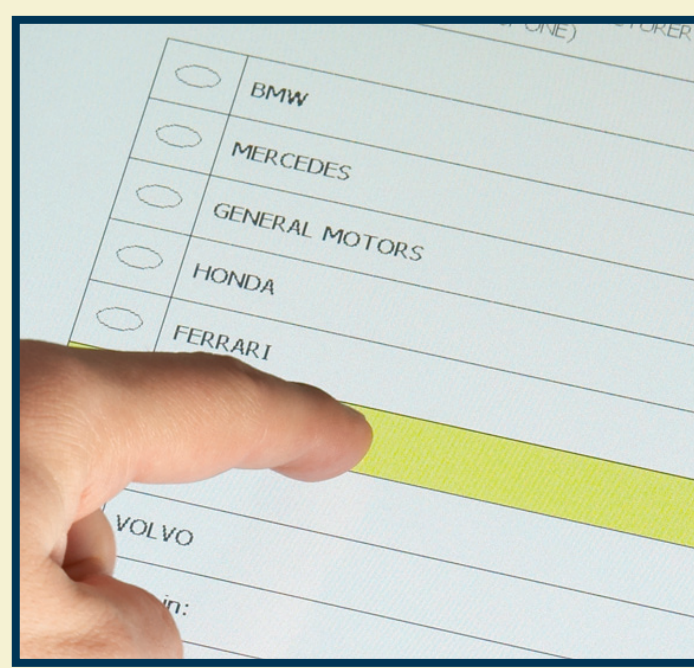


2 MAKE SELECTIONS

Touch each candidate and/or issue for which you intend to cast a vote. Your selections will be highlighted in yellow. You may change your selections at any time.

A. WRITE-IN CANDIDATES

For write-in candidates, touch the **“WRITE-IN”** option, and a keyboard will appear on the screen. Type in the name of a candidate and press **“OK.”**



B. ON-SCREEN ACCESSIBILITY

The ES&S AutoMARK contains additional features to assist you during the voting process. At the bottom of the screen, you will have the opportunity to use the **ZOOM IN**, **ZOOM OUT**, or **HIGH CONTRAST** features to make the ballot easier to read.

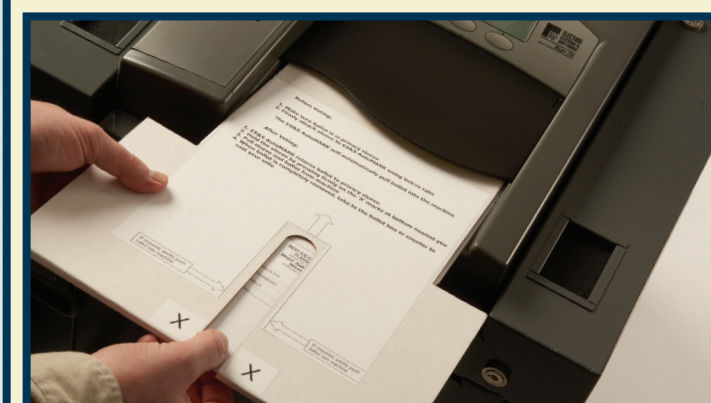
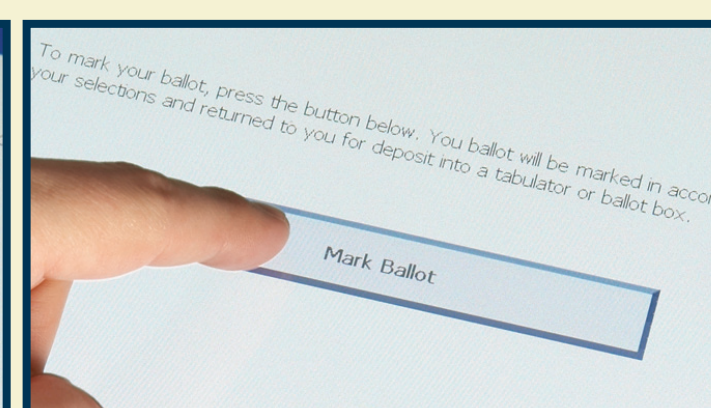
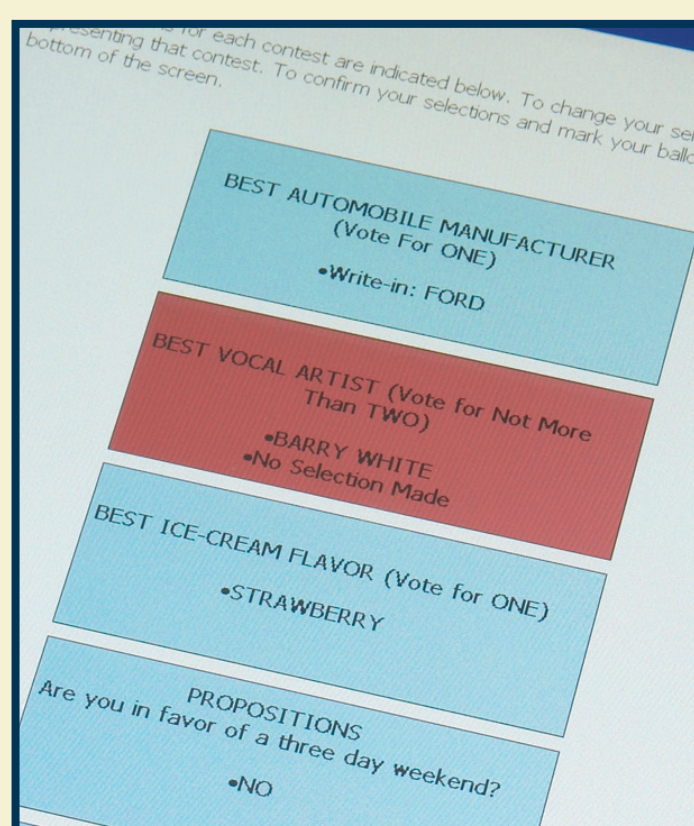


Left: **ZOOM IN/OUT** and **HIGH CONTRAST** buttons, found at the bottom of the screen, are available to make the ballot easier to read.

3 REVIEW AND MARK BALLOT

After you have completed the last page of your ballot, press the **“REVIEW”** button.

Review your selections, and when complete, press **“MARK BALLOT”** to complete the voting procedure and to print the ballot. Then insert the marked ballot into the feeder slot of the ballot tabulator.



To change a selection, touch the box next to a candidate or issue and re-select the proper choice. Then, hit the **“REVIEW”** button again to return to the summary screen.

FOR MORE INFORMATION

Sample County Office
123 Address Lane
Sample City, ST 12345

(890) 123-4567
address@samplecounty.us

www.SampleCounty.org

Sample
County
Logo